

# N.W. 1/4 SECTION 36, T.7N., R.2W., S.L.B.&M.

PREFIX: 19-041

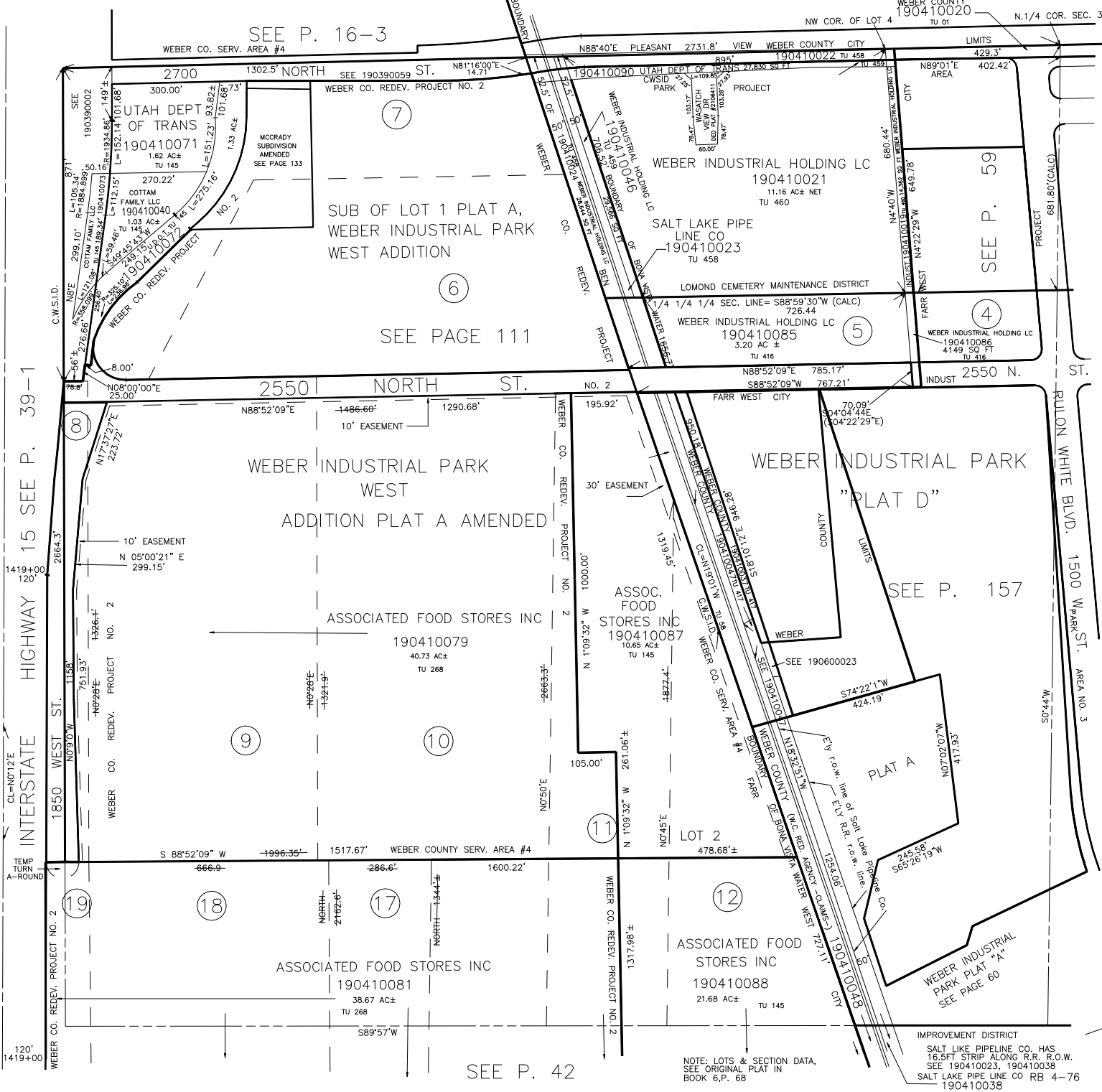
IN TOWN OF PLEASANT VIEW & FARR WEST CITY

TAXING UNIT: 01,17,58,145,268,328,329,330,331

SCALE 1" = 200'

SEE P. 16-3

WEBER COUNTY 190410020  
NW COR. OF LOT 4 N.1/4 COR. SEC. 36



7  
SUB OF LOT 1 PLAT A,  
WEBER INDUSTRIAL PARK  
WEST ADDITION

SEE PAGE 111

WEBER INDUSTRIAL HOLDING LC  
190410021  
11.16 AC± NET  
TU 460

SALT LAKE PIPE  
LINE CO  
190410023  
TU 458

LOMOND CEMETERY MAINTENANCE DISTRICT  
4 1/4 1/4 SEC. LINE= S88°59'30"W (CALC)  
726.44  
WEBER INDUSTRIAL HOLDING LC  
190410085  
3.20 AC ±  
TU 416

WEBER INDUSTRIAL HOLDING LC  
190410086  
4149 SQ FT  
TU 416

WEBER INDUSTRIAL PARK  
WEST  
ADDITION PLAT A AMENDED

ASSOC. FOOD STORES INC  
190410079  
40.73 AC±  
TU 268

ASSOC. FOOD STORES INC  
190410087  
10.65 AC±  
TU 145

WEBER INDUSTRIAL PARK  
"PLAT D"

SEE P. 157

PLAT A  
N07°02'07"W  
417.93'

ASSOC. FOOD STORES INC  
190410081  
38.67 AC±  
TU 268

ASSOC. FOOD STORES INC  
190410088  
21.68 AC±  
TU 145

WEBER INDUSTRIAL PARK PLAT "A"  
SEE PAGE 60

SEE P. 42

NOTE: LOTS & SECTION DATA,  
SEE ORIGINAL PLAT IN  
BOOK 6,P. 68

IMPROVEMENT DISTRICT  
SALT LAKE PIPELINE CO. HAS  
16.5FT STRIP ALONG R.R. R.O.W.  
SEE 190410023, 190410038  
SALT LAKE PIPE LINE CO RB 4-76  
190410038